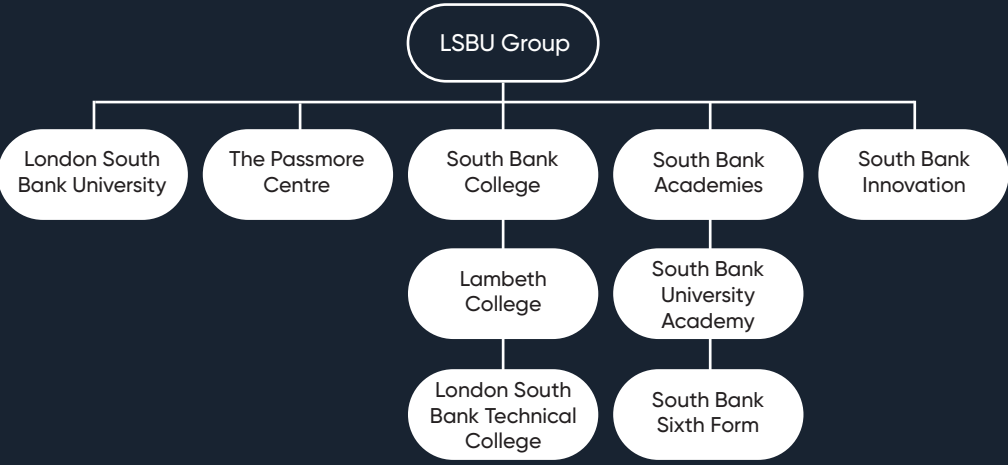


Fit for the future, ready for the real world.

Our goal is to help you succeed, no matter what your age, background, or educational experience. We provide career-focussed pathways across all levels, from Entry to Level 8, providing high-quality education and sector specific learning to prepare you for your life beyond education and qualifications.



Joining LSBU Group gives our students unrivalled access to educational opportunities, advice and guidance as well as sought-after apprenticeships and work placements. Our students are guaranteed progression to both LSBTC and LSBU\*.

Whether your next destination is within LSBU Group or elsewhere, we are one of a handful of providers who offer students the opportunity to progress to one of our new Level 4 one-year courses. Successful completion of this enables our students to fast-track to year 2 of an LSBU degree, saving money as well as providing a standalone qualification that employers recognise should you decide to leave your studies there.

\*after successful completion of a Group qualification that has a progression route



Further information about careers in Health and Social Care can be found here:

- www.healthcareers.nhs.uk
- www.skillsforcare.org.uk
- www.everydayisdifferent.com
- www.careerpilot.org.uk
- www.nationalcareers.service.gov.uk
- www.startprofile.com

Places on Health and Social Care courses, at all levels, are highly sought-after every year. If you believe this is the career pathway for you, but you lack hands-on experience, then we advise you to seek a placement prior to applying.

The following websites are a great place to start:

- www.england.nhs.uk/participation/get-involved/volunteering
- www.guysandstthomas.nhs.uk/careers/other-types-of-work/volunteering/volunteering.aspx
- www.southlondoncares.org.uk/get-involved
- www.london.gov.uk
- www.kch.nhs.uk/about/get-involved/volunteering
- www.handsonlondon.org.uk
- www.healthwatchlambeth.org.uk/volunteer

LSBU | GROUP

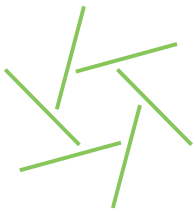


HEALTH AND SOCIAL CARE



The Need for Health and Social Care Roles

A career in Health and Social Care is much more than just a job; it is a hugely-rewarding vocation and, for many, a true calling. It takes a very special person to succeed in this sector, but for those of you who possess the right personal qualities, dedication, and attitude, a lifetime of rewarding and fulfilling employment awaits you.



3.2 million people currently working in the Health and Social Care sector in the UK

There are around 152,000 job opportunities across England's Health & Social Care sector, reflecting strong demand & growing career prospects within a workforce of over 3.2 million.

Health and Social Care remains one of the UK's most advertised job sectors, driven by high demand and ongoing workforce turnover.

An Introduction to Health and Social Care

The Health and Social Care sector in England encompasses a wide range of organisations dedicated to improving physical and mental health, wellbeing, and independence. These include hospitals, clinics, care homes, nurseries, dental practices, and community outreach services. The sector is broadly divided into Healthcare – which focuses on diagnosing and treating medical conditions, primarily through the NHS – and Social Care, which offers non-clinical support such as child protection, youth services, residential care, and end-of-life support.

Social Care careers offer diverse entry points, with many roles requiring vocational training rather than academic degrees. In 2025, 67% of social care staff hold at least an NVQ Level 2 qualification, reflecting the sector's emphasis on practical, on-the-job training. Despite growing demand, the system faces challenges in access and workforce capacity. However, innovation and quality improvements continue to shape a more responsive and inclusive care landscape.

LSBU Group is one of the UK's leading providers of clinical education for allied health and related professions. Our healthcare programmes are designed to reflect current industry developments, ensuring students gain relevant, up-to-date skills. Through partnerships with over 60+ NHS organisations, students benefit from expert-led teaching and hands-on placements in hospitals, clinics, and community settings—preparing them to become confident, qualified healthcare professionals.



In May 2025, BSc Midwifery student Ayah Mohamed Bashir was shortlisted for the Student Midwife of the Year award in recognition of her Baby Packs initiative, which ensures every newborn receives a dignified start in life.

Ayah Mohamed Bashir, Student Midwife of the Year



Is Health and Social Care the Right Pathway for You?

While qualifications and placements provide essential knowledge and experience, a successful career in Health and Social Care also relies on key personal attributes and transferable skills. These include strong communication and active listening, the ability to build trust with individuals and teams, and confidence in applying professional judgement. You'll need solid organisational and IT skills, emotional resilience under pressure, and a high level of compassion, empathy, and discretion – qualities that ensure safe, person-centred care across diverse settings.

Careers in Health and Social Care

With over 350 recognised roles across Health and Social Care, this sector offers a diverse and rewarding career landscape for those with the right ambition, values, and personal qualities. Whether you're just starting out or looking to progress, many roles allow you to build experience, gain qualifications, and advance along a flexible career pathway.

In Healthcare, you could be a frontline professional in a hospital ward, operating theatre, or community clinic – or work behind the scenes in labs, offices, or digital health services. Roles include Nurses, Midwives, Physiotherapists, Radiographers, and Biomedical Scientists, with opportunities to specialise or move into leadership.

In Social Care, you'll support individuals with non-clinical needs, helping them live healthier, more independent lives. Careers span home care, residential settings, day centres, and supported housing, with roles such as Social Workers, Care Coordinators, and Community Support Workers. The sector values empathy, resilience, and relationship-building skills.

As Health and Social Care services become more integrated, many roles now bridge both areas—such as Occupational Therapists, Healthcare Support Workers, and Health Promotion Specialists – reflecting shared values of compassion, collaboration, and person-centred care

The NHS in England is estimated to require around 314,000 additional full-time equivalent staff by 2030/31 to deliver care at 2018/19 levels, assuming moderate productivity improvements.

The salary for a Care Manager averages from around £27k to £56k p.a., while some senior managers can earn up to £72k; Biomedical Scientist salaries range from £28k to £46k, rising to closer to £60k to £75k for consultant biomedical scientists who have reached the top of their field; a Dental Nurse can expect a starting salary of around £23k rising to £33k with experience; once qualified, a Health Promotion Specialist average wage is between £27k to £32k, rising to £39k to £46k with suitable experience. Those working at a very senior level can earn from £40k to £46k; newly-qualified Midwives and Nurses start at around £28k but once experienced the pay ranges from £33k to £39k. Those working in senior positions can earn £40k to £46k, while nurse consultants can earn up to £78k.

There are plenty of opportunities open to you. Here are just a few ideas:

- Ambulance Driver
- Anaesthesia Technician
- Biomedical Scientist
- Care Manager
- Charity Officer
- Community Development Officer
- Community Support Worker
- Counsellor
- Dental Hygienist
- Dental Technician
- Dentist
- Dietician
- Health Promotion Specialist
- Healthcare Support Worker
- Mental Health Practitioner
- Midwife
- Nurse
- Occupational Therapist
- Paediatrician
- Paramedic
- Pharmacist
- Physiotherapist
- Public Health Manager
- Psychologist
- Social Worker
- Social Work Assistant
- Youth Worker



