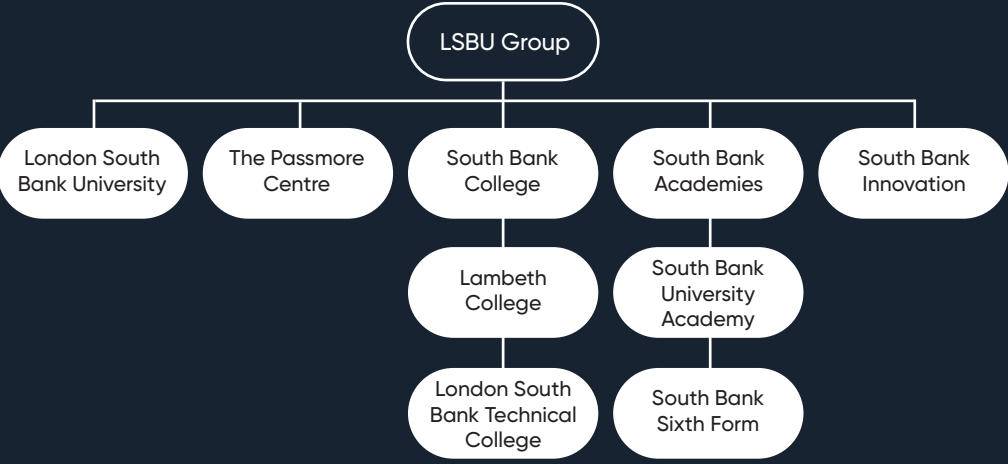


Fit for the future, ready for the real world.

Our goal is to help you succeed, no matter what your age, background, or educational experience. We provide career-focussed pathways across all levels, from Entry to Level 8, providing high-quality education and sector specific learning to prepare you for your life beyond education and qualifications.



Joining LSBU Group gives our students unrivalled access to educational opportunities, advice and guidance as well as sought-after apprenticeships and work placements. Our students are guaranteed progression to both LSBTC and LSBU*.

Whether your next destination is within LSBU Group or elsewhere, we are one of a handful of providers who offer students the opportunity to progress to one of our new Level 4 one-year courses. Successful completion of this enables our students to fast-track to year 2 of an LSBU degree, saving money as well as providing a standalone qualification that employers recognise should you decide to leave your studies there.

*after successful completion of a Group qualification that has a progression route

Part of LSBU | GROUP



Further information about careers in Information Technology can be found here:

- | | | |
|--|--|---|
| www.careerpilot.org.uk | www.nationalcareers.service.gov.uk | www.startprofile.com |
| www.prospects.ac.uk | www.careersmart.org.uk | Biology: www.rsb.org.uk |
| Chemistry: www.rsc.org | Dentistry: www.bdia.org.uk | Environmental Science: www.the-ies.org |
| Psychology: www.bps.org.uk | Physics: www.iop.org | Physiotherapy: www.csp.org.uk |
| Sport and Exercise: www.bases.org.uk | | Forensic Science: www.csfs.org |

Places on Applied Science and Dental courses, at all levels, are highly sought-after every year. If you believe this is the career pathway for you, but you lack hands-on experience, then we advise you to seek a placement prior to applying.

The following websites are a great place to start:

- | | |
|--|--|
| www.england.nhs.uk/participation/get-involved/volunteering | |
| www.guysandstthomas.nhs.uk/careers/other-types-of-work/volunteering/volunteering.aspx | |
| www.kch.nhs.uk/about/get-involved/volunteering | www.london.gov.uk/what-we-do/volunteering |
| www.southlondoncares.org.uk/get-involved | www.handsonlondon.org.uk |
| www.healthwatchlambeth.org.uk/volunteer | www.britishtscienceassociation.org/volunteer |

LSBU | GROUP



APPLIED SCIENCE AND DENTAL



The Need for Applied Scientists

There has never been a better time to consider entering this rewarding industry. The life sciences directly employ over 268,000 people across the country and consists of over 6,600 businesses. With careers that range from Clinical research to Sport and Exercise Scientists, there are thousands of exciting opportunities within the sector.

Over 6,500 new jobs were published in the table across the life sciences sectors

Vacancy listings in Greater London alone being in excess of 2,400 new jobs

A report by The Board of Trade found that the overall life science sector had an annual turnover of £89 billion

Laboratory roles were the busiest scientific function, with over 1,000 new scientific vacancies.

An Introduction to Applied Science

Applied sciences refer to science subjects that involve applying scientific principles to practical settings. Whereas Pure Science is the research that focuses on theoretical aspects of different topics, Applied Science takes these findings and – through experimentation, testing, and practical application – implements them in a real-world context. A huge and varied number of industries require Applied Scientists, including dentistry, clinical healthcare, disease prevention, engineering, technology, manufacturing, conservation and ecology, professional sports, psychology, physiotherapy, criminology, forensics, energy and pharmaceuticals.



Is Applied Science and Dental the Right Pathway for You?

If you enjoy all things science, have a passion for problem solving and a great eye for detail- a career in Applied Science could be for you. Science is always evolving so you'll be a lifelong learner, staying up to date on the latest breakthroughs and discoveries. Applied science is often very hands on and involves practical experiments and working with equipment in laboratories.

Careers in Applied Science

Studying applied science can open a world of job opportunities. From working in labs to being part of research teams, you could be contributing to discoveries and innovations. In the UK STEM related jobs are growing at a rate of around 1.7 times faster than non-STEM jobs.

In 2022, there were approximately 668,000 people employed by the NHS in full-time clinical roles, and many of these medical professionals work in the Applied Sciences; it is estimated that the NHS will require an additional 314,000 full-time staff by 2031 in order to meet the country's needs – meaning there has never been a better time to consider entering this vital and rewarding industry.

The private sector also offers excellent career prospects and job opportunities for the right person. The life sciences as a whole (of which Applied Science is a key part) directly employs 268,000 people across the country (excluding the NHS and public sector), and consists of over 6,600 businesses. When factoring in those employees that are employed in the wider life sciences industry this figure is actually closer to 580,000. What's more, 50% of all life science jobs are located in London, East of England and the South East – meaning that when you study with LSBU Group, you're already perfectly positioned in the heart of the scientific sector.

Employers, actively seek LSBU Group Applied Science graduates with accredited degrees, as they're a mark of quality assurance and professional relevance. Our industry connections include The Worshipful Company of Bakers, the London Fire Brigade, Met Police, the NHS, England Rugby and the Rio Ferdinand Foundation.



There are plenty of opportunities open to you. Here are just a few ideas:

- | | |
|--|--|
| • Biomedical Scientist | • Microbiologist |
| • Chemist | • Molecular Biologist |
| • Chemical Technician | • Pharmaceutical Sales and Marketing |
| • Clinical Researcher | • Pharmacologist |
| • Criminologist | • Physiotherapist |
| • Dental Nurse | • Psychologist |
| • Environmental Scientist | • Radiologic Technologist |
| • Field Application or Support Scientist | • Research Assistant |
| • Food Scientist | • Sport and Exercise Scientist |
| • Forensic Scientist | • Sustainability Manager |
| • Laboratory Analyst | • Technical Application or Support Scientist |
| • Laboratory Technician | • Technical Sales Specialist |
| • Marine Biologist | |
| • Medical Science Liaison (MSL) | |

Chemists can earn from £21k to £40k p.a. while Senior Medicinal Chemists can earn up to £80k annually; a Dental Nurse can expect a starting salary of around £22k rising to £33k with experience; Environmental Scientists earn an average of £36k annually, with their pay ranging from £23k to £56k; Forensic Scientist salaries typically start at around £21k while training, increasing to between £25k and £35k with experience, and reaching in excess of £50k p.a. at senior levels; Laboratory Technician starting salaries tend to be around £19k to £22k, rising to £28k with the requisite experience and qualifications, while senior and management technicians can earn in the range of £30k to £40k a year.

LSBU

London South Bank University

LSBTC

London South Bank Technical College

LC

Lambeth College

SBUSIXTH

South Bank University
Sixth Form

SBUA

South Bank University Academy

ENTRY
LEVEL

Award, Certificate (ELC), Diploma
English for speakers of Other
languages (ESOL)
Essential skills
Functional skills
Skills for Life

English/
Maths

ESOL
English for
Speakers of
Other Languages

ESOL 16–18s study
programme (tasters) –
construction/sport/health
and social care/early years

Adult Basic Skills –
Digital, Employability,
Numeracy, Skills for
Life, Literacy

Sector
based Work
Academy
Programmes

Inclusive Learning – Preparation for Employment/
Independent Living Skills/Learning for the
Community/Life and Work Skills, Practical Living
Skills/ Progression to Life and Work/ Preparation
for Work and Supported Internship

ESOL for
Health and
Social Care

LEVEL
1

First Certificate, Award, Certificate,
Diploma, ESOL
Essential skills
Functional skills
National vocational qualification (NVQ)

Science

ESOL
English for
Speakers of
Other Languages

ESOL for Health
and Social
Care

English/Maths

LEVEL
2

Intermediate Apprenticeship,
Award, Certificate, Diploma, ESOL
Essential skills
Functional skills
GCSE
NVQ

Science

Science T Level
Foundation
Programme

ESOL
English for Speakers of
Other Languages

English/Maths

LEVEL
3

Access to HE Diploma
Advanced Apprenticeship
A Level
Applied General
Award, Certificate, Diploma, ESOL
NVQ
T Level

Applied Science
(Forensic Science)

Applied Science
(Biomedical Science)

Science

Dental Nurse
(Apprenticeship)

HE Diploma: Medical
Biosciences (Access)

HE Diploma: Health &
Human Science (Access)

HE Diploma: Nursing
(Access)

Principles and
Practice of
Dental Nursing

Health

Healthcare
Science

Health

Range of A Level
options

Chemistry

Biology

Psychology

Sociology

LEVEL
4

CertHE
Higher Apprenticeship
HNC
Award, Certificate, Diploma
NVQ

(Child Development/Criminal/Forensic Psychology, Criminology)

BSc Hons Psychology

BSc Biomedical Science

BSc Hons Forensic Science

BSc Hons Psychological Counselling

BSc Hons Sport and Exercise Science

Foundation Degree in Dental Technology

HNC Applied Sciences
(Forensic Science)

HNC Applied Sciences
(Biology)

LEVEL
5

DipHE
Foundation Degree
HND
Award, Certificate, Diploma
NVQ

BSc Hons Psychology

BSc Biomedical Science

BSc Hons Forensic Science

BSc Hons Psychological Counselling

BSc Hons Sport and Exercise Science

Foundation Degree in Dental Technology

LEVEL
6

Degree Apprenticeship
Degree (with or without Honours)
Graduate Certificate/Diploma
Award, Certificate, Diploma
NVQ

BSc Hons Psychology

BSc Biomedical Science

BSc Hons Forensic Science

BSc Hons Psychological Counselling

BSc Hons Sport and Exercise Science

Foundation Degree in Dental Technology

LEVEL
7

Integrated Master's Degree
Award, Certificate, Diploma,
NVQ, Master's Degree
Postgraduate Certificate / Diploma
Postgraduate Certificate in Education
(PGCE)

MSc Addiction
Psychology
and Counselling

MRes Applied Science

MRes Human Sciences

MSc Mental Health and
Clinical Psychology

MRes
Psychology

MRes Food
Sciences

MSc
Psychology

LEVEL
8

Doctorate (PhD or DPhil)
Award, Certificate, Diploma

PhD Human Sciences

PhD Psychology

PgCert Mental Health
and Clinical Psychology

PhD Food Sciences